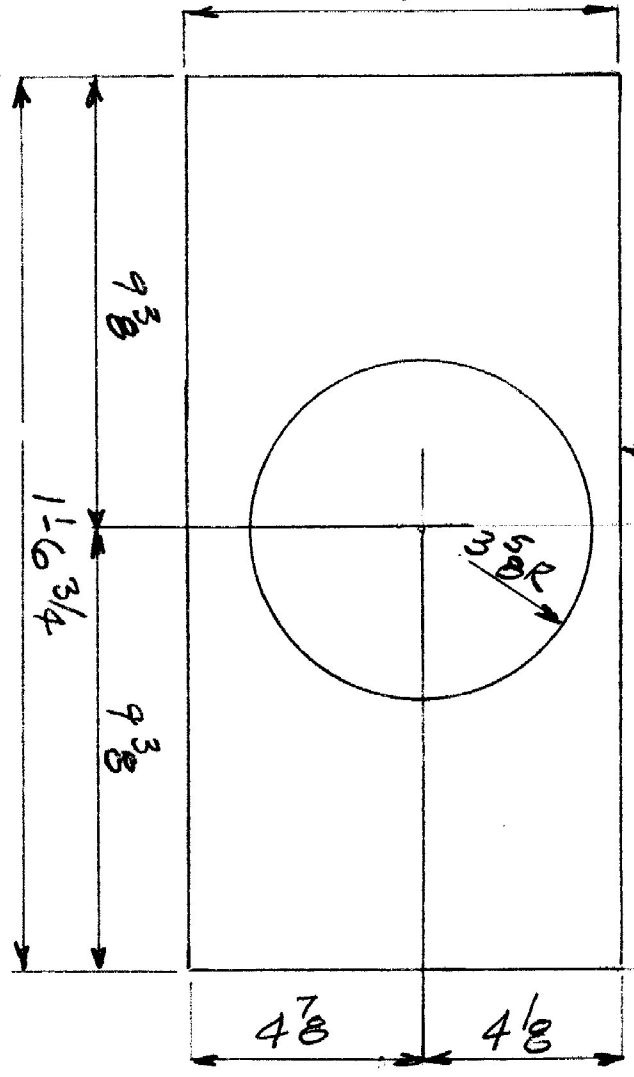
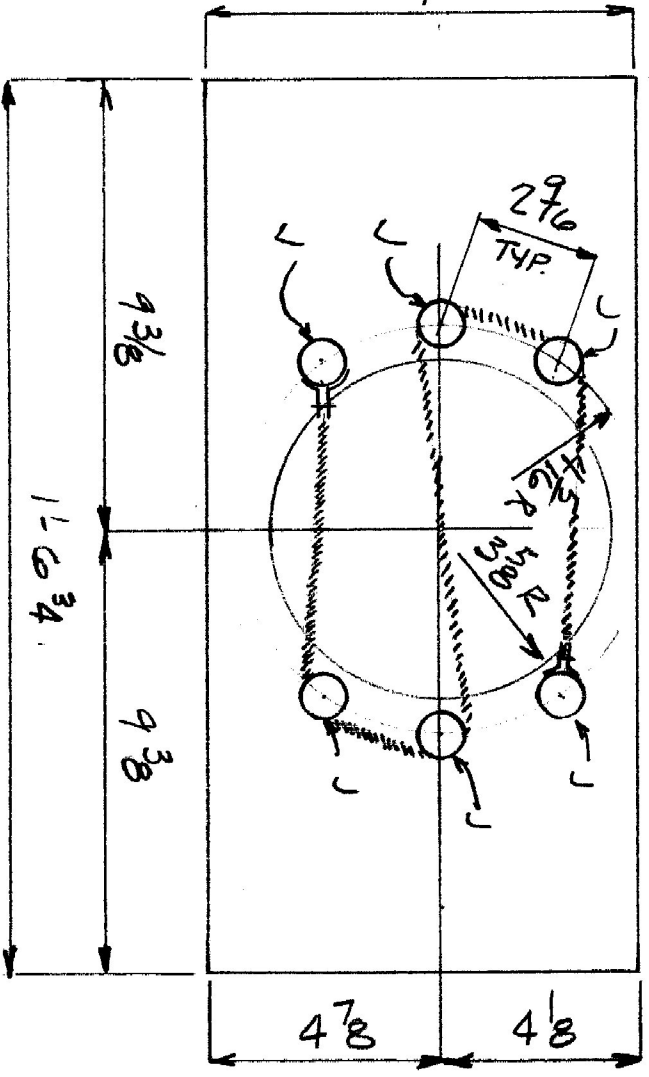


TOP SIDE ↑



PIECE E



PIECE F

BILL OF MATERIAL

NO	MARK	DESCRIPTION
2	a	WHITE PINE 9 X 3/4 X 3'7
2	b PL	WHITE PINE 9 X 3/4 X 3'-5 1/2
2	c	WHITE PINE 9 X 3/4 X 1'9
2	d	WHITE PINE 9 X 3/4 X 1'-7 1/2
1	e	PLYWOOD 9 X 1/2 X 1'-6 3/4
2	f	PLYWOOD 9 X 1/2 X 1'-6 3/4
1	g	WHITE PINE 7 X 3/4 X 0'-8
1	h	7" φ STOVE PIPE X 0'-10
1	i	PLYWOOD 18 3/4 X 1/2 X 3'-4 3/4
12	j	1" φ X 1" HIGH INSULATORS WITH METAL STRAP CONNECTOR AND BOLT, NUT
20		PIPE 1/2" X 1'-7 3/8 BLACK LAYS IN NOTCHES IN B PL
		110VOLT ELECTRICAL CORD, MISC WIRING, ELECTRICAL CONNECTORS, SHEET METAL SCREWS, MISC SCREWS, ETC. AS REQUIRED

HONEY HEATER

DESIGNED BY: CRAIG CELLA
 SCALE: 3"=1'0 DATE:
 SHEET: 3 OF 5